



## **K100D IO-Link Device Parameter Data Add-On Instruction Guide, v4 November 25<sup>th</sup>, 2024**

This document covers the installation and use of Add-On Instruction (AOI) for the Logix Designer software package from Rockwell Automation. This AOI handles acyclic IO-Link commands to and from a K100D device. This AOI has nine User Defined Tag data types.

**This IO-Link Device Parameter Data AOI is meant to be used alongside a v4 Banner IO-Link Master AOI.**

### **Components**

Banner\_K100D\_Param\_v4\_AOI.L5X

### **UDT's Packaged with the AOI**

Banner\_IOL\_Port\_v4  
Banner\_K100D\_Add\_Settings\_v4  
Banner\_K100D\_Custom\_Color\_v4  
Banner\_K100D\_Display\_Settings\_v4  
Banner\_K100D\_Measure\_Base\_Config\_v4  
Banner\_K100D\_Measure\_General\_Config\_v4  
Banner\_K100D\_Measure\_Threshold\_Config\_v4  
Banner\_K100D\_RD\_v4  
Banner\_K100D\_Timer\_Settings  
Banner\_K100D\_v4  
Banner\_K100D\_WD\_v4

### **NOTE:**

This Banner IO-Link Device Parameter AOI is useless on its own.

It is intended to be linked to a v4 Banner IO-Link Master AOI to function.

### **Other AOIs Available Separately**

Banner has AOI files for controlling other Banner IO-Link devices and for a variety of IO-Link Masters. Banner also has AOI files for easily handling Banner device Process Data.

Contents

1. Installation Process.....

2. Configuring the AOI.....

3. Linking the Device AOI to the Master AOI.....

4. Using the Paired IO-Link Master and Device Parameter Data AOIs .....

Appendix A Command Register .....

Appendix B AOI Resets.....

1

3

5

6

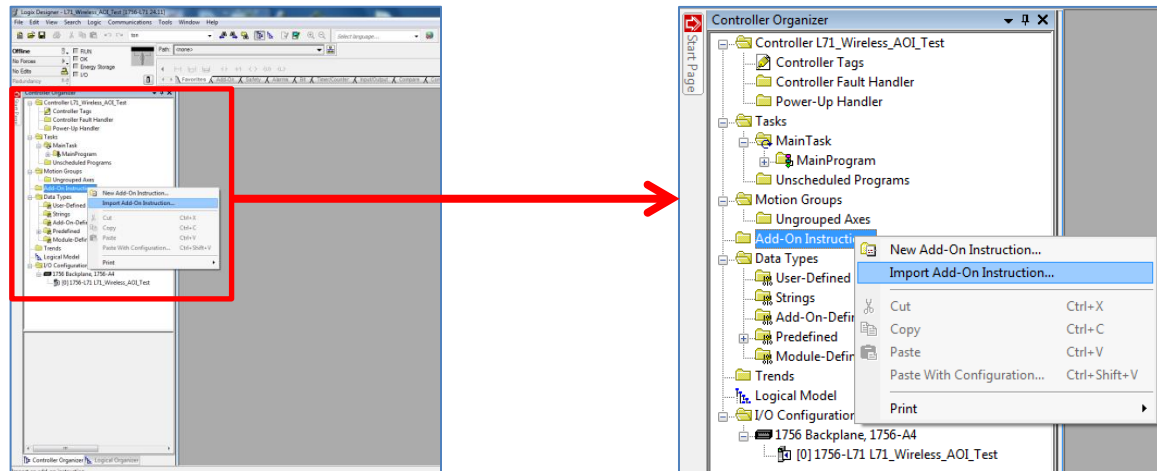
7

8

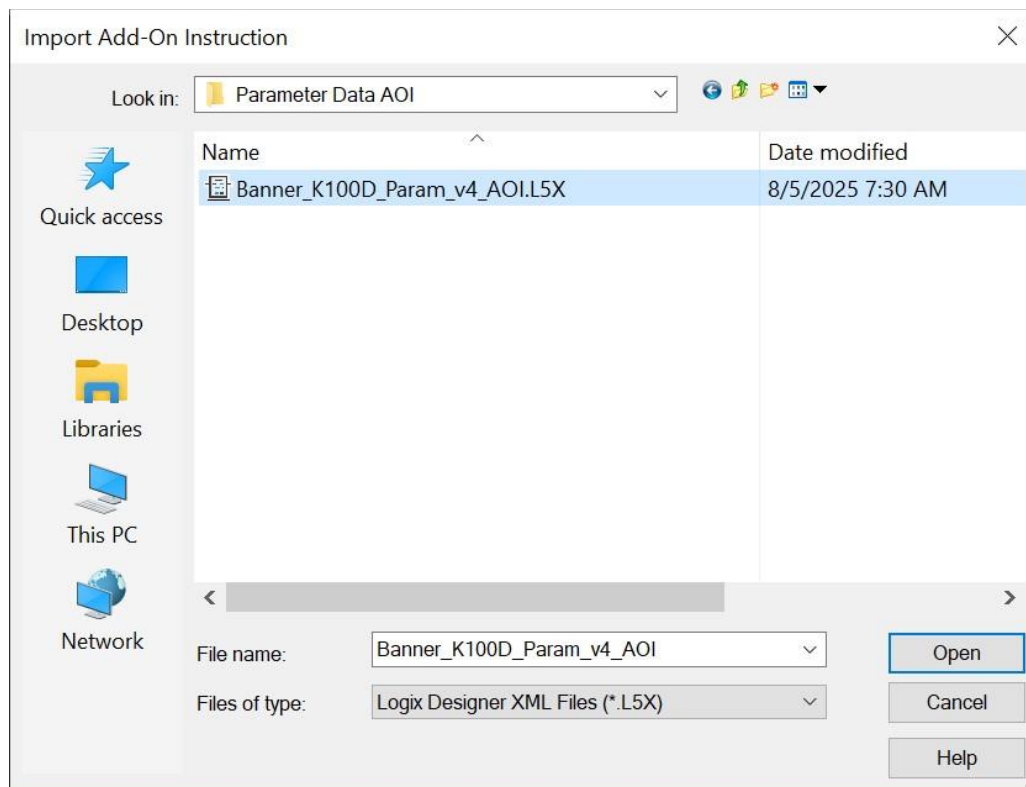
## 1. Installation AOI

This section describes how to install the AOI in Logix Designer software.

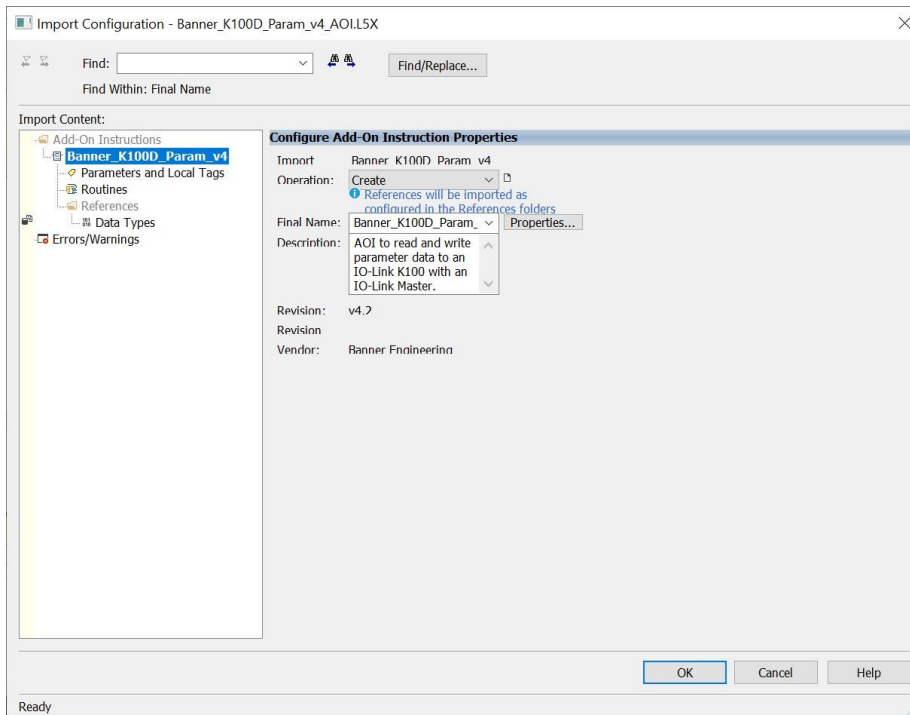
1. Open a project.
2. In the Controller Organizer window, right-click on the Add-On Instruction folder. Select the Import Add-On Instruction option.



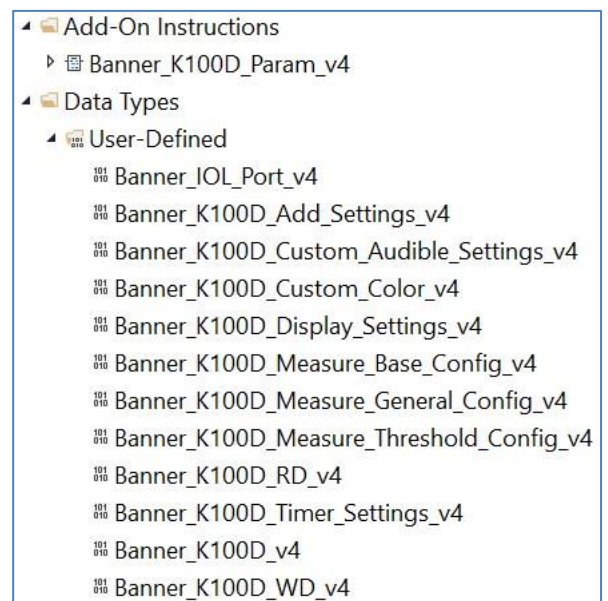
3. Navigate to the correct file location and select the AOI to be installed. In this example the "Banner\_K100D\_Param\_v4\_AOI.L5X" file will be selected. Click the Open button.



4. The Import Configuration window will pop up. The default selection will create all the necessary items for the AOI. Click the OK button to complete the import process.



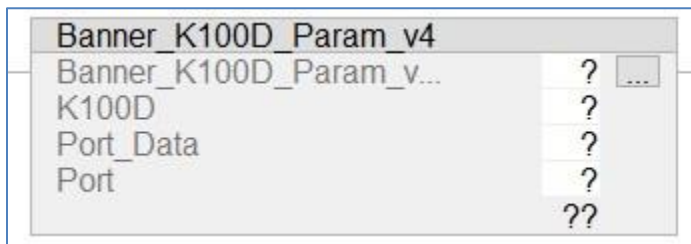
5. The AOI is added to the Controller Organizer window and should look like the picture on the right.
6. AOI installation into the Logix Designer software complete.



## 2. Configuring the AOI

Make sure to add and configure a Banner IO-Link Master AOI to your program before adding a Banner IO-Link Device AOI.

1. Add the “Banner\_K100D\_Param\_v4” AOI to your ladder logic program. For each of the question marks shown in the instruction we need to create and link a new tag array. The AOI includes new types of User Defined Tag (UDT): custom arrays of tags meant specifically for this AOI.



2. In the AOI, right-click on the question mark on the line labeled “Banner\_K100D\_Param\_v4”. Click New Tag. In this example, we’ll use the name “K100D\_IOLM1\_01\_Status”. The example naming convention accounts for this being an K100D device connected to IO-Link Master #1, port #1, in our program. More masters could be named IOLM2, IOLM3, and different sensors could be connected at other port numbers, etc.

The “EnableIn” and “EnableOut” variables are ladder logic rung status bits automatically added to all AOIs.

3. Now click on the question mark on the line labeled “K100D”. Click New Tag. In this example, we’ll use the name “K100D\_IOLM1\_01”. This array of tags includes the port number to which the K100D is connected and the Read and Write data blocks, made up of the information from the K100D IO-Link Index and Subindex values.

**New Tag** [Close]

Name:  Create ▼

Description:

Usage:

Type:  Connection...

Alias For:

Data Type:  ...

Parameter Connection:

Scope:

External Access:

Style:

☐ Constant

☐ Sequencing

☐ Open Configuration

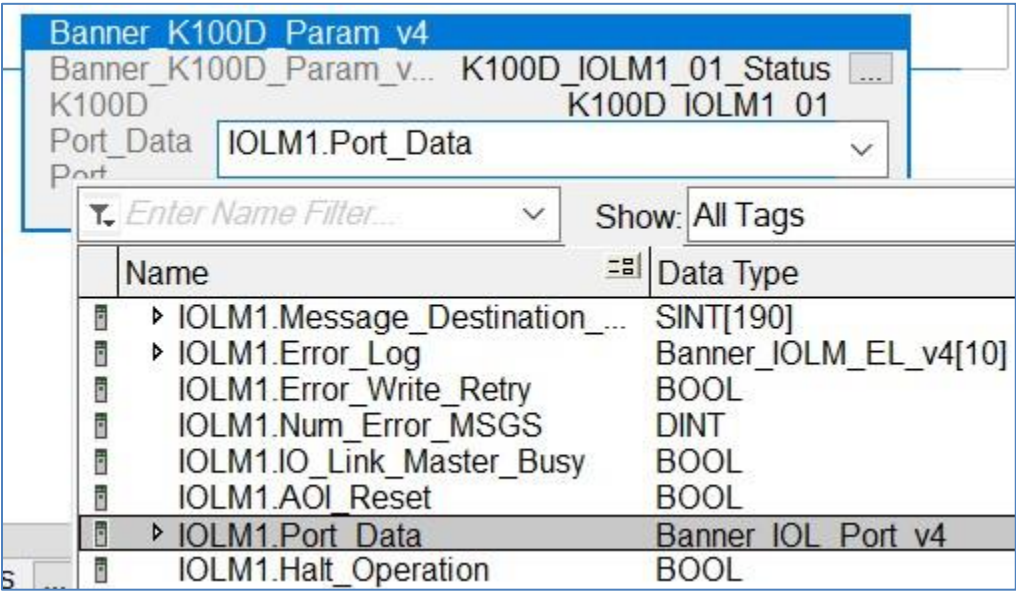
☐ Open Parameter Connections

Cancel Help

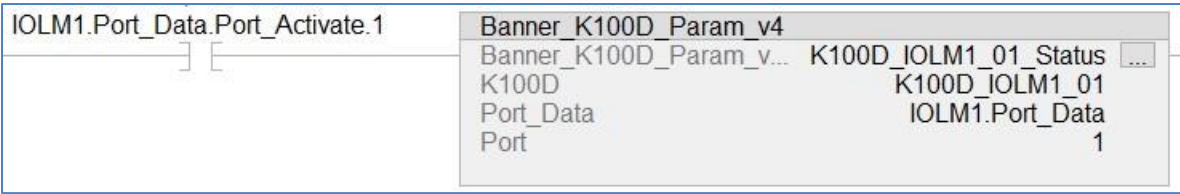
### 3. Linking the Device AOI to the Master AOI

The third tag in the K100D AOI is meant to be tied into the IO-Link Master AOI.

1. For the “Port\_Data” line, choose the relevant IO-Link Master AOI’s “Port\_Data” variable. In this example, we choose “IOLM1.Port\_Data”.



2. For the last line of the K100D AOI, “Port”, type in a number equal to the IO-Link Master port number to which the K100D is connected. In this example, the device is on port 1.



3. The final step is to place an examine on in front of the AOI. This is linked to the Port\_Activate for the port the device is plugged into. In this example that is “IOLM1.Port\_Data.Port\_Activate.1”.

#### 4. Using the Paired IO-Link Master and Device Parameter Data AOIs

The goal is to make the Banner device's IO-Link Index and Subindex values appear in PLC tag arrays as if it were an EtherNet/IP-speaking device. Reading from and writing to the Banner IO-Link device becomes as easy as changing tag values in the PLC. All the complicated work of translating from EtherNet/IP to IO-Link is handled automatically, behind the scenes.

When the program is downloaded to the PLC and the PLC goes into run mode, the IO-Link Master AOI performs a global read for each connected Banner device AOI.

There are two methods for acyclic reading of Banner device Index and Subindex values.

1. The initial global read, as requested by the IO-Link Master AOI after the PLC program is downloaded and run.
2. Manually via the "Command" variable found in every Device Parameter Data AOI. The "Command" register can be used to force one-time read or write actions, as described in Appendix A of any Banner Device Parameter AOI guide.

Acyclic writes are done by updating the values that need to be adjusted. Then enter the necessary value into the "Command" register to trigger an IO-Link Index write. Each ISDU Index has a specific value that activates it. The "Command" values are described in Appendix A.



## Appendix A Command Register

The “Command” register can be used to control the connected IO-Link device ‘by hand’. Placing the correct command numbers into this register is how the AOI achieves its automatic control.

◀ K100D_IOLM1_01	{...}
K100D_IOLM1_01.Initial_Global_Read	1
▶ K100D_IOLM1_01.Command	0
▶ K100D_IOLM1_01.Read	{...}
▶ K100D_IOLM1_01.Write	{...}
K100D_IOLM1_01.Reset	0

The table below (continued on next page) shows the command numbers associated with the reading and writing of specific pieces of data. See the K100D IODD file or the IO-Link Data Reference Guide for more information of the parameters.

**Table 1: AOI Command Numbers**

K100D Parameter (IO-Link Index #)	Read Command	Write Command
Global Read (all)	1	
Direct Parameters (0)	2	
System Command (2)		43
Device Access Locks (12)	4	44
Serial Number (21)	5	
Operating Mode (64)	6	46
Additional Settings (80)	7	47
Display Settings (82)	8	48
Timer Settings (83)	9	49
Measure General Config (84)	10	50
Measure Base Config (85)	11	51
Measure Threshold 1 Config (86)	12	52
Measure Threshold 2 Config (87)	13	53
Measure Threshold 3 Config (88)	14	54
Measure Threshold 4 Config (89)	15	55
Custom Color 1 (90)	16	56
Custom Color 2 (91)	17	57
Message 1 (92.1)	18	58
Message 2 (92.2)	19	59
Message 3 (92.3)	20	60
Message 4 (92.4)	21	61
Message 5 (92.5)	22	62
Message 6 (92.6)	23	63
Message 7 (93.1)	24	64
Message 8 (93.2)	25	65
Message 9 (93.3)	26	66
Message 10 (93.4)	27	67

Message 11 (93.5)	28	68
Message 12 (93.6)	29	69
Message 13 (93.7)	30	70
Custom Audible Settings (94)	31	71

## Appendix B AOI Resets

From time to time, a reset may be needed for an AOI, particularly if one of the read/write processes the AOI undertakes is interrupted. To this end, each Device Parameter Data AOI and IO-Link Master AOI has a reset bit.

Toggling this bit to a “1” causes the AOI to start over and try again.

◀ K100D_IOLM1_01	{...}
K100D_IOLM1_01.Initial_Global_Read	1
▶ K100D_IOLM1_01.Command	0
▶ K100D_IOLM1_01.Read	{...}
▶ K100D_IOLM1_01.Write	{...}
K100D_IOLM1_01.Reset	0

Best practices suggest adding a rung to your ladder logic program that resets all IO-Link Master and Device Parameter AOIs on the first scan. The example below shows one IO-Link Master, called IOLM1, and one connected K100D having their respective AOIs being reset in this way.

